

DAMON
ENGINEERING, INC.

EMMETT
DAMON

ARCHITECT
ROBERT
WILTSE

1095 FLORIDA AVENUE
SLIDELL, LA. 70458
985-649-5832

WWW.DAMONENGINEERING.COM
WEBSITE:
EMAIL:
DAMMONENG@BELLSOUTH.NET

ARCHITECTURE
ENGINEERING
STUDIES
PLANNING
INVESTIGATION
EXPERT WITNESS

CENTURY PARK
UNIVERSITY OF
SOUTHERN
MISSISSIPPI

IDN-ACME INC.
1504 JUSTIN RD.
METAIRIE, LA 70001

NP2 & NP4
ACCESS DOOR
CABLE LAYOUT

| |
|------------------|
| REV: #1 10/30/09 |
| SCALE: AS NOTED |
| JOB#: 2028 |
| DATE:6-29-2009 |
| SHEET: 6 |

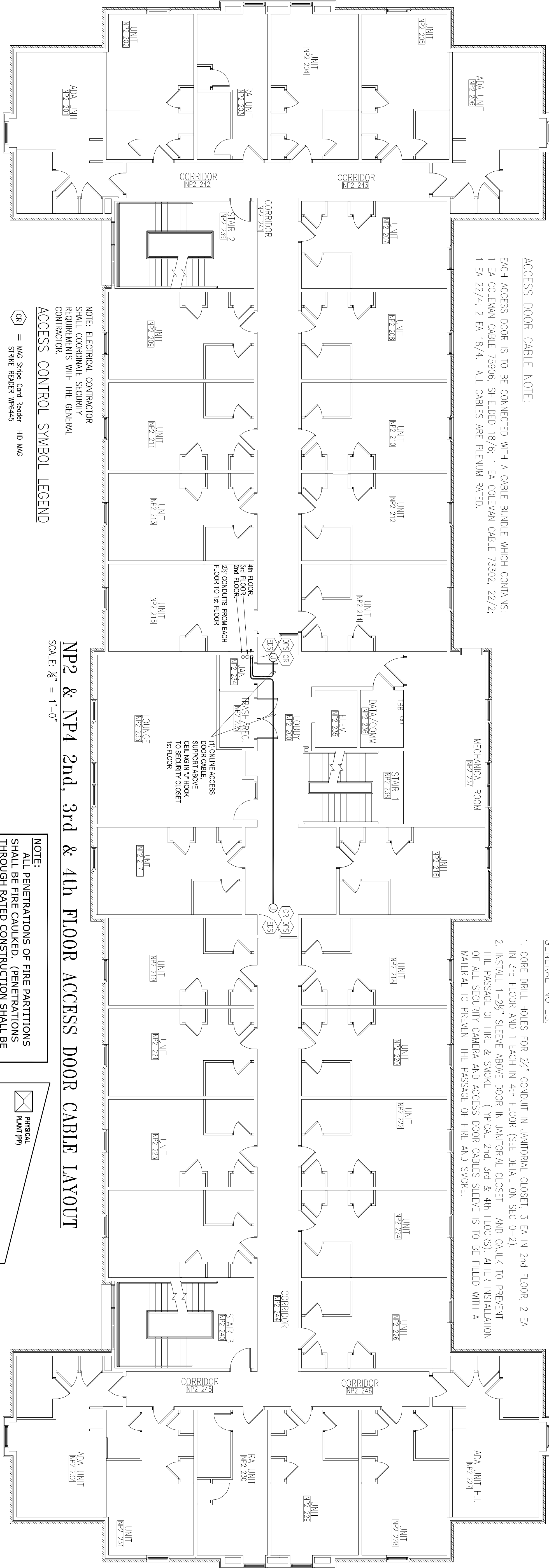
OF: 8

GENERAL NOTES:

1. CORE DRILL HOLES FOR 2½" CONDUIT IN JANITORIAL CLOSET, 3 EA IN 2nd FLOOR, 2 EA IN 3rd FLOOR AND 1 EACH IN 4th FLOOR (SEE DETAIL ON SEC 0-2).
2. INSTALL 1-2½" SLEEVE ABOVE DOOR IN JANITORIAL CLOSET AND CAULK TO PREVENT THE PASSAGE OF FIRE & SMOKE (TYPICAL 2nd, 3rd & 4th FLOORS). AFTER INSTALLATION OF ALL SECURITY CAMERA AND ACCESS DOOR CABLES SLEEVE IS TO BE FILLED WITH A MATERIAL TO PREVENT THE PASSAGE OF FIRE AND SMOKE.

NP2 & NP4 2nd, 3rd & 4th FLOOR ACCESS DOOR CABLE LAYOUT

SCALE: ¾" = 1'-0"

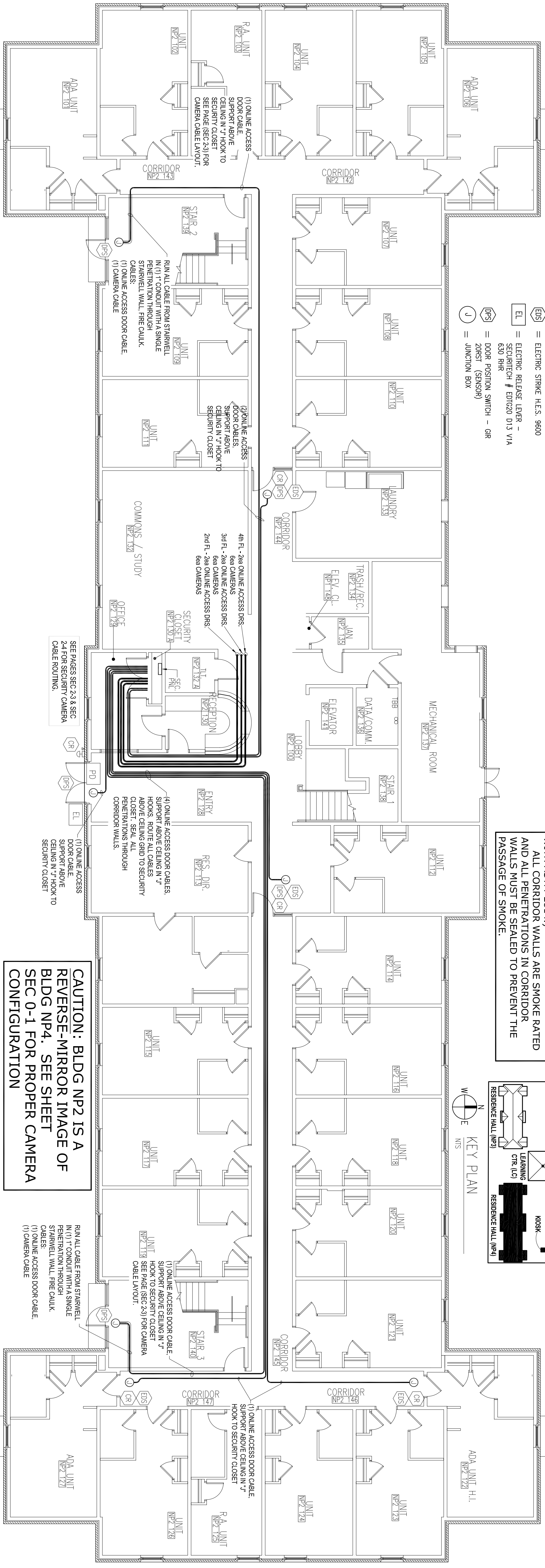
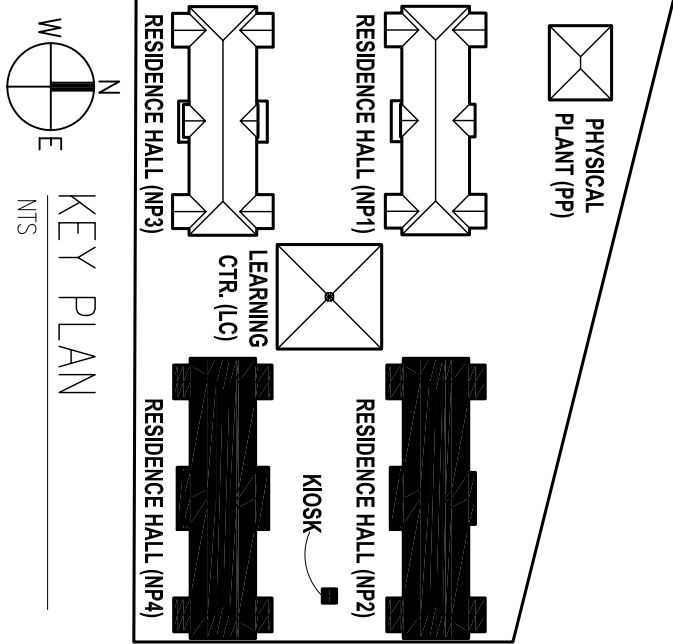


NOTE: ELECTRICAL CONTRACTOR SHALL COORDINATE SECURITY REQUIREMENTS WITH THE GENERAL CONTRACTOR.

ACCESS CONTROL SYMBOL LEGEND

- CR = MAC Stripe Card Reader HD MAC STRIKE READER W#5445
- BD = PUSH BUTTON (BY OTHERS)
- PD = POWER DOOR OPERATOR (BY OTHERS)
- ES = ELECTRIC STRIKE H.E.S. 9600
- EL = ELECTRIC RELEASE LEVER - SECURITYTECH # ED020 D13 VIA 830 RHR
- PS = DOOR POSITION SWITCH - CIR 208ST (SENSOR)
- J = JUNCTION BOX

NOTE:
ALL PENETRATIONS OF FIRE PARTITIONS SHALL BE FIRE CAULKED. (PENETRATIONS THROUGH RATED CONSTRUCTION SHALL BE SEALED WITH A MATERIAL CAPABLE OF PREVENTING THE PASSAGE OF FLAMES AND HOT GASES WHEN TESTED IN ACCORDANCE WITH ASTM-E814.)
ALL CORRIDOR WALLS ARE SMOKE RATED AND ALL PENETRATIONS IN CORRIDOR WALLS MUST BE SEALED TO PREVENT THE PASSAGE OF SMOKE.



NP2 & NP4 1ST FLOOR ACCESS DOOR CABLE LAYOUT

SCALE: ¾" = 1'-0"

CAUTION: BLDG NP2 IS A REVERSE-MIRROR IMAGE OF BLDG NP4. SEE SHEET SEC 0-1 FOR PROPER CAMERA CONFIGURATION